



THE ELLINIKON

FACTSHEET

The Ellinikon | The largest greenfield urban regeneration project in Europe.



 6.2 mln sq.m.
total land area

 2.7 mln sq.m.
total buildable area

 2 mln sq.m.
The Ellinikon Park

 600,000 sq.m.
open green spaces


 3.5 km
premium coastline
and beaches

The Ellinikon |

Designed to positively impact the local, regional, and national economy.



 €8 bln
total investment

 2.4%
contribution to GDP

 85,000
new jobs

 1 mln
visitors expected annually



The Ellinikon | The Park



2,000,000 sq.m.
Total area




50 km
Path network for
pedestrians and cyclists


- ◆ Self-sufficient with respect to its irrigation and electricity needs
- ◆ Designed with strict biodiversity guidelines taking into consideration the Mediterranean climate
- ◆ The Ellinikon Experience Park, located within the Aviation Hangars Precinct and covering an area of approx. 75,000 sq.m., is the first part of the Park that has already been delivered to the public, signifying the initial green shoots of a much greater transformation.

The Ellinikon | The Coastal Front



 3.5 km
premium coastline and beaches

 1 km
newly developed beach

 400
berths in the upgraded marina

◆ Open to everyone
for swimming, water sports, and
fun year-round

The Ellinikon | Residential Developments

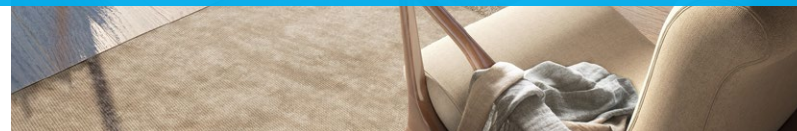


Riviera Tower,
designed by
Foster + Partners



The first luxury beachfront high-rise residential tower in Greece

- ◆ A green tower and a model of sustainable architectural design
- ◆ Spectacular Aegean Sea, coastal and mountain views
- ◆ Highest quality specifications and engineering technology



The Ellinikon | Residential Developments



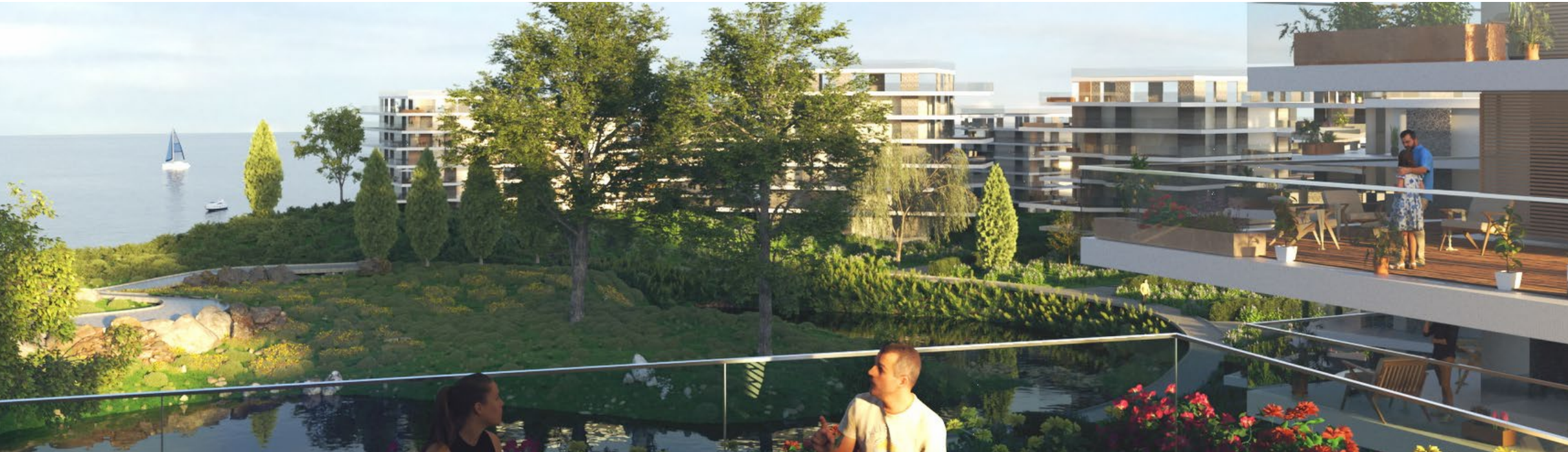
The Cove Villas
and Residences



Luxury beachfront villas and low-rise residences in one of Athens' most beautiful locations

- ◆ Bespoke design providing convenience and security
- ◆ Sea views and direct beach access
- ◆ A family-friendly complex of elegant low-rise apartments behind the villas close to the sea

The Ellinikon | Residential Developments



The Parkfront
Residences

An array of fine apartment buildings positioned around The Ellinikon Park

- ◆ Designed to reflect the warm, open spirit of Athenian living
- ◆ Marvelous views into the lush green landscape
- ◆ Immediate access to shaded pathways and the exceptional activities throughout The Ellinikon Park

The Ellinikon | Retail & Offices



The Ellinikon
Commercial Hub,
designed by **Aedas**



A state-of-the-art commercial and business destination home to the largest mall in Athens

- ◆ A “shopping center of the future” based on a hybrid model
- ◆ An “all day out” destination offering a unique blend of international and aspirational brands, memorable experiential activations of the latest retail trends and exceptional F&B propositions
- ◆ Ultra-modern, functional, flexible and green office spaces

The Ellinikon | Retail & Offices



Riviera Galleria,
designed by
Kengo Kuma & Associates

An upscale destination with a luxurious feel, ideal for shopping, socializing and leisure

- ◆ The first premium retail development in the Attica region and a lifestyle destination of unique sophisticated architecture
- ◆ A plethora of dining options addressing a breath-taking waterfront
- ◆ Generous open areas for events, pop-ups and memorable experiences

The Ellinikon | Retail & Offices



Mixed-Use Tower

A landmark high-rise building including a Business Hotel and Prime Office Spaces with magnificent views of the surrounding area

- ◆ The first of its kind tower combining hotel and grade A+ office spaces
- ◆ Highest sustainability standards and energy conservation strategies
- ◆ Excellent urban connectivity and accessibility



The Ellinikon | Hospitality



High-end facilities that will establish Athens as a top world-class tourism destination.

- ◆ **5-star hotel** at the Agios Kosmas Marina
- ◆ **5-star luxury hotel** on the coastal front
- ◆ **Branded residences**
- ◆ **5-star business hotel**
- ◆ **Integrated Resort & Casino**

The Ellinikon | Sports



Ultra-modern sports facilities

- ◆ Track and field sports
- ◆ Swimming sports
- ◆ Soccer
- ◆ Gymnastics
- ◆ Throwing sports
- ◆ Indoor gym
- ◆ Academies for soccer, basketball, tennis, beach volley and gymnastics

The Ellinikon | Culture



A number of cultural landmarks to discover

- ◆ **12 km cultural path**
connecting archaeological & culture spaces



- ◆ **Modern exhibition spaces**

- ◆ **Entertainment venues**